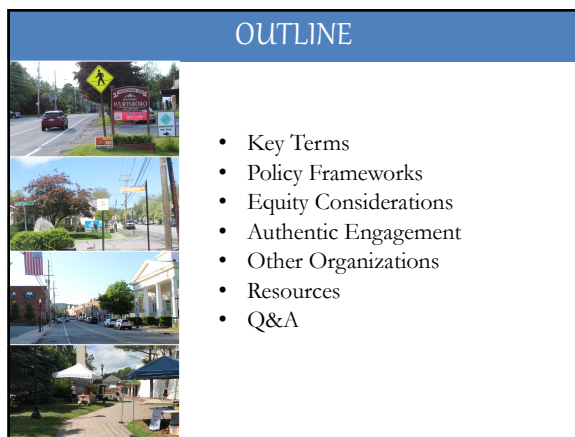
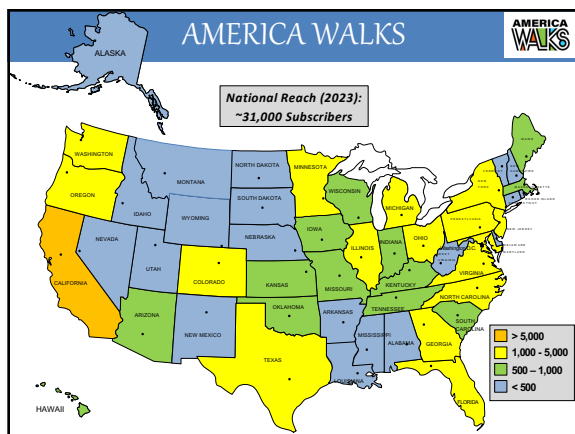




1



2



3

MISSION AND VISION

Walking
Advance safe,
equitable, accessible,
and enjoyable places to
walk and move ...



➔

Walkability
... by giving people
and communities the
resources to effectively
advocate for change.



4

MONTHLY WEBINARS

Climate and Age-Friendly Communities
a discussion with author
DECEMBER 12TH AT 3PM EASTERN

NEW WEBINAR
THE WALK AUD
AN EFFECTIVE TOOL
FOR COMMUNITY
CHANGE

WALK: SLOW DOWN. WAKE UP. AND CONNECT AT 1-3 MILES PER HOUR
with author Jonathon Stalls

Tuesday, February 14th 6:00 PM
Join us with AARP Livable Communities and former Walking College Fellows

WATCH NOW

5

THE WALKING COLLEGE



6



7



8



9

KEY TERMS

The Problem:

- Climate Change Mitigation
- Greenhouse Gas Emissions (GHG)
- Vehicle Miles Travelled (VMT)

The Solution:

- Transit-Oriented Development (TOD)
- Active Transportation
- Walkability

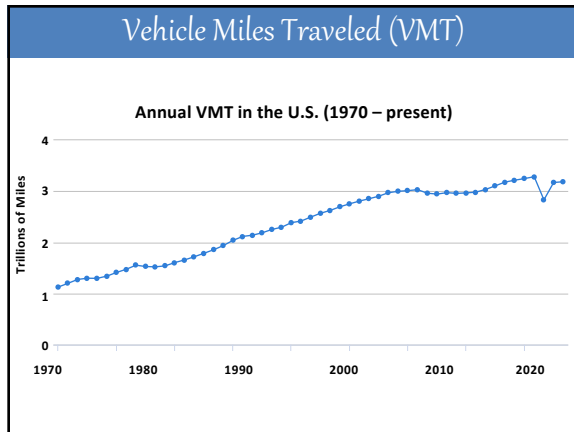
10

Climate Change Mitigation

11

Greenhouse Gas Emissions (GHG)

12



13



14

Transit-Oriented Development (TOD)

Description:

- Compact, walkable, mixed-use neighborhoods with frequent, high-quality transit service

Opportunities/Benefits:


- Low car ownership and cost savings for residents
- Improved air quality and reduced GHG emissions
- Better health outcomes and more social engagement
- Revitalization of local economy/businesses

Strategies:

- Zoning reform to allow increased density, etc.
- Public investment in transit infrastructure

15

KEY TERMS



The Problem:

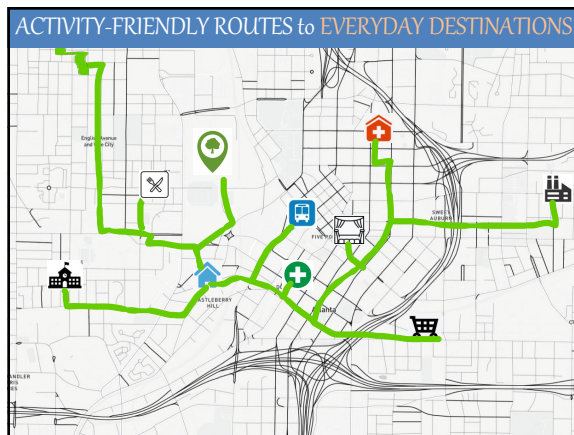
- Climate Change Mitigation
- Greenhouse Gas Emissions (GHG)
- Vehicle Miles Travelled (VMT)

The Solution:

- Transit-Oriented Development (TOD)
- Active Transportation

ACTIVITY-FRIENDLY ROUTES to EVERYDAY DESTINATIONS

16



17



18



19



20



21



22




23

COMPLETE STREETS POLICIES

Premise:

- For many decades, most streets and roads have been designed and built for cars only (an “incomplete street”)



24

COMPLETE STREETS POLICIES

Premise:

- For many decades, most streets and roads have been designed and built for cars only (an “incomplete street”)

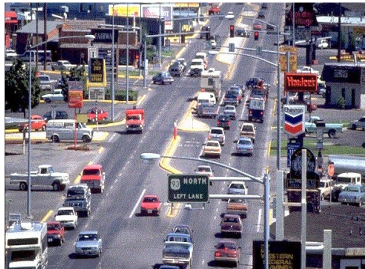


25

COMPLETE STREETS POLICIES

Premise:

- For many decades, most streets and roads have been designed and built for cars only (an “incomplete street”)



26

COMPLETE STREETS POLICIES

Premise:

- For many decades, most streets and roads have been designed and built for cars only (an “incomplete street”)



27

COMPLETE STREETS POLICIES

Premise:

- For many decades, most streets and roads have been designed and built for cars only (an “incomplete street”)

General Goal:

- Require engineers to accommodate all users (pedestrians, cyclists, people with disabilities, transit users, older adults, children, etc.)

Specific Questions:


- Include staff training, community oversight, annual reports, etc.?
- Apply to modification of existing roads as well as new construction?
- Allow exceptions under defined circumstances?
- Resolution or ordinance?

Implementation:

- More than 1,700 communities have adopted Complete Streets policies in last 20 years – however, many of them are very weak

28

COMPLETE STREETS POLICIES



29

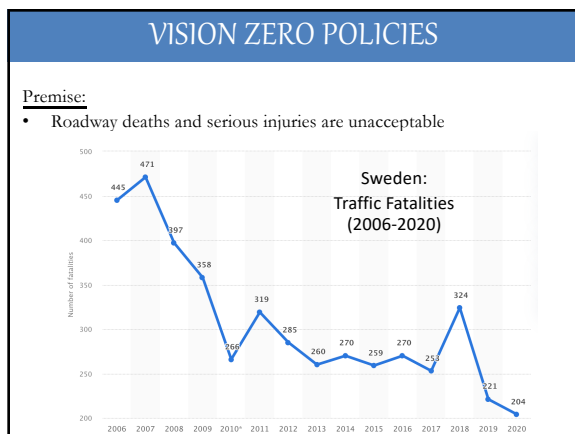
VISION ZERO POLICIES

Premise:

- Roadway deaths and serious injuries are unacceptable



30



31

VISION ZERO POLICIES

Premise:

- Roadway deaths and serious injuries are unacceptable

General Goal:

- Reduce deaths and serious injuries on the transportation system to ZERO ("Vision. Zero") by a specified date in the future

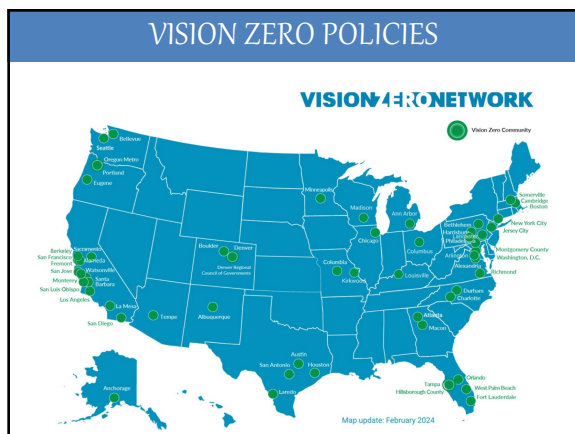
Policy Framework:

- Education strategies: communications, safety campaigns, etc.
- Enforcement strategies: police traffic stops, increased penalties, etc.
- Engineering strategies: roadway redesign, traffic calming

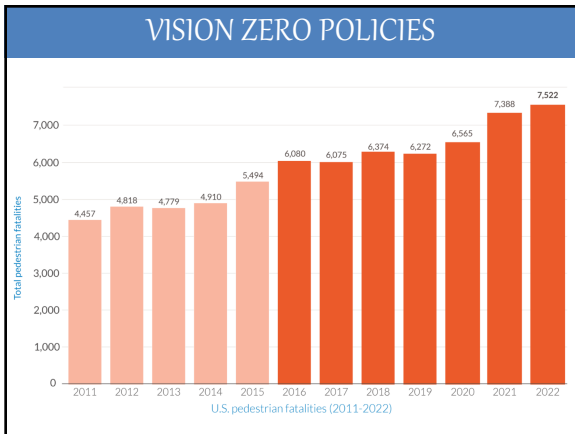
Implementation:

- About 60 cities and counties

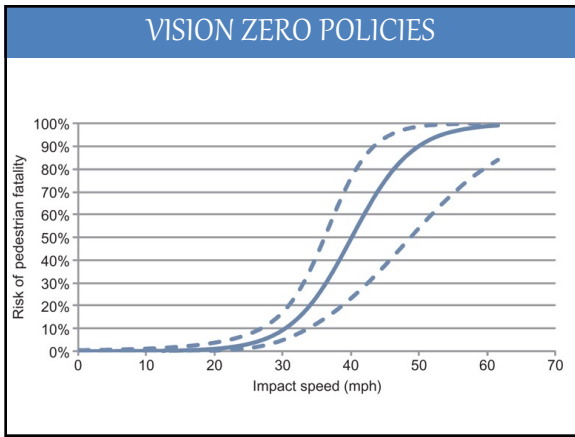
32



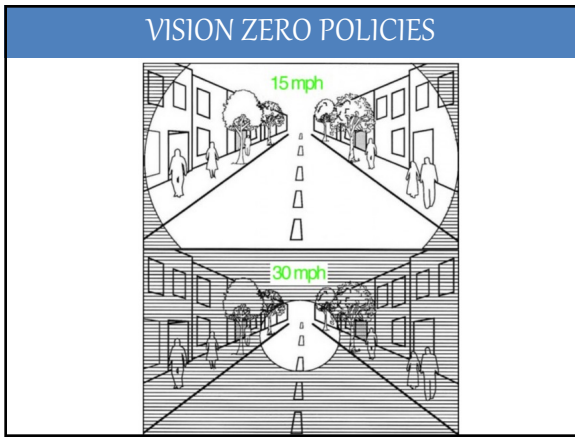
33



34



35



36

VISION ZERO POLICIES

Premise:

- Roadway deaths and serious injuries are unacceptable

General Goal:

- Reduce deaths and serious injuries on the transportation system to ZERO ("Vision. Zero") by a specified date in the future

Policy Framework:

- ~~Education strategies: communications, safety campaigns, etc.~~
- ~~Enforcement strategies: police traffic stops, increased penalties, etc.~~
- **Engineering strategies: roadway redesign, traffic calming**

Implementation:

- About 60 cities and counties

37

THE SAFE SYSTEMS APPROACH

Principles:

- Safety is Proactive
- Humans Make Mistakes
- Humans Are Vulnerable
- Death and Serious Injuries are Unacceptable
- Responsibility is Shared
- Redundancy is Crucial



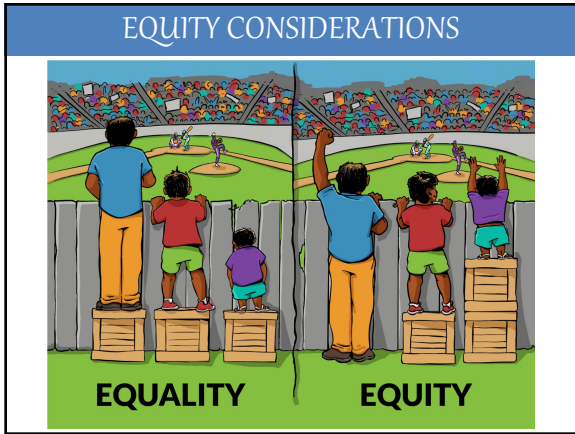
38

EQUITY CONSIDERATIONS

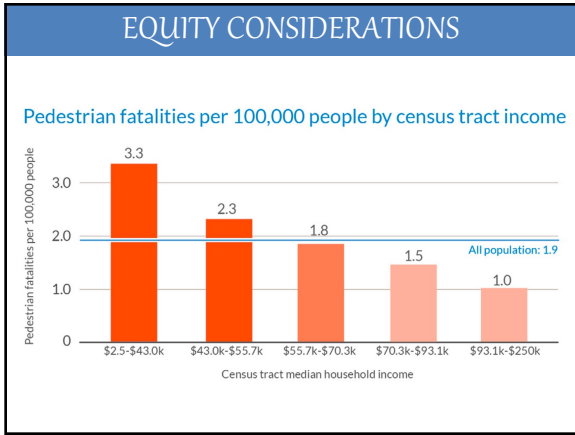
Definition of "Equity:"

- "Equity" refers to fairness and justice
- It differs from "equality" in that:
 - "Equality" means providing the same resources to everyone
 - "Equity" means recognizing that we do not all start from the same place
- Some groups are victims of historic (intentional and unintentional) systemic discrimination:
 - Access for people with disabilities
 - Federally-funded highway planning
 - "Red-lining" housing policy
- "Equity" means providing more resources to those who need more

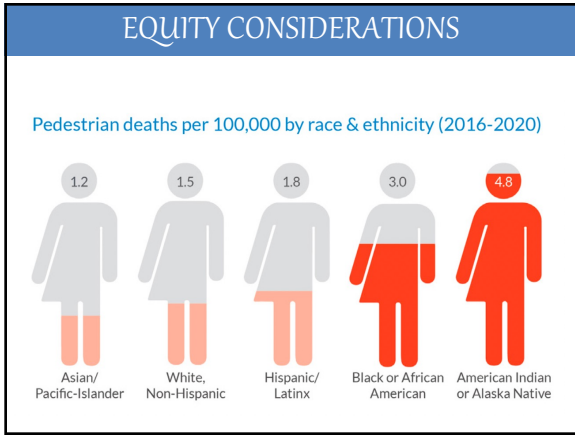
39



40



41



42

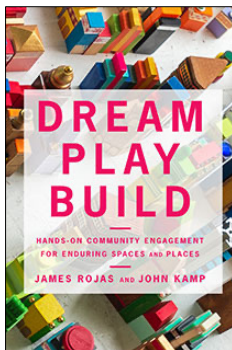
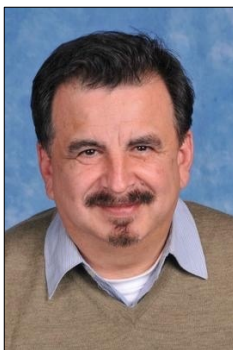
AUTHENTIC ENGAGEMENT

Questions to Ask:

- Whose input/feedback are you seeking through engagement?
- What do you know about this community's culture, religion, history – especially any history of systemic discrimination?
- Do you have existing personal relationships with any members of this community?
- When planning a community engagement session:
 - What location and day/time will work best for this community?
 - Would it help if you provide a childcare service or transportation assistance?
 - Would it help if you provide food? "YES"
- Should community members who assist with the planning project receive compensation?

43

AUTHENTIC ENGAGEMENT



44

ORGANIZATIONS



- America Walks
- League of American Bicyclists
- Safe Routes Partnership
- Smart Growth America
- Transportation for America
- National Complete Streets Coalition
- Vision Zero Network
- National Center for Rural Road Safety
- ChangeLab Solutions

45



46
