

SULLIVAN COUNTY Parks & Recreation

Discover | Explore | Connect | Play



WWW.SULLIVANNY.GOV

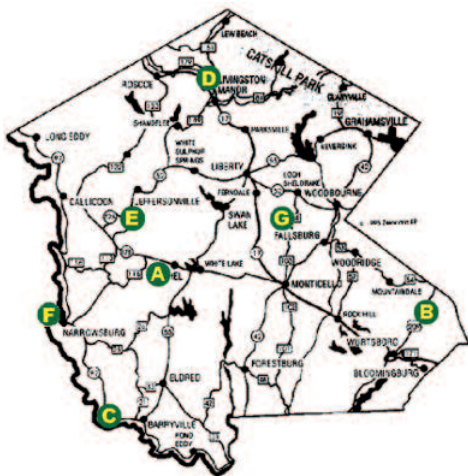
SULLIVAN COUNTY PARKS, RECREATION & BEAUTIFICATION DEPARTMENT

100 North Street • Monticello, New York 12701

PHONE: 845-807-0287

EMAIL: scparks@sullivanny.gov

WEBSITE: www.sullivanny.gov



- A** - Lake Superior State Park, *Bethel*
- B** - D&H Canal Interpretive Center & Linear Park, *Summitville*
- C** - Minisink Battleground Park, *Barryville*
- D** - Livingston Manor Covered Bridge Park, *Livingston Manor*
- E** - Stone Arch Bridge Historical Park, *Kenoza Lake*
- F** - Fort Delaware Museum of Colonial History, *Narrowsburg*
- G** - Sullivan County Cultural Center (Museum), *Hurleyville*

PARK ACTIVITY SYMBOL DESCRIPTION



PICNIC AREA



SWIMMING



BOAT LAUNCH



**SHOWERS
CHANGING AREA**



**GROUP PICNIC
PAVILION (FEE)**



HIKING



VENDING



FISHING



PLAYGROUND



RESTROOMS



**HANDICAP
ACCESSIBLE**



**SCHOOL/GROUP
TOURS**

WWW.SULLIVANNY.GOV

FORT DELAWARE MUSEUM OF COLONIAL HISTORY



Town of Tusten, New York

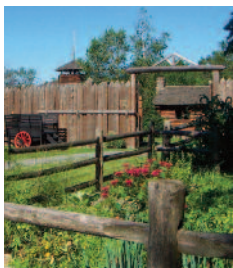
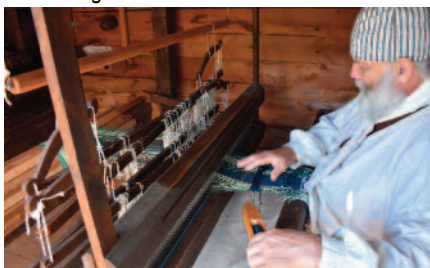
6615 Route 97, Narrowsburg, NY

The **Fort Delaware Museum of Colonial History** is an authentic depiction of the life of the Delaware Company Pioneers who settled in the Upper Delaware Valley in 1754. A tour of the facilities includes demonstrations of early settlers' lifestyles and craft-making. A gift shop, vending area, and picnicking facilities are located on the grounds. Each spring, the Fort hosts over 1,000 students who participate in the Student Days program.



This facility is located within the Upper Delaware Scenic and Recreational River, a unit of the National Park Service.

The Fort is owned and maintained by Sullivan County through its Department of Parks, Recreation and Beautification. It is operated by The Delaware Company, a modern nonprofit whose mission is to promote and support the history and historic landmarks of the Upper Delaware River Valley and beyond through education, outreach and fundraising.



WWW.SULLIVANNY.GOV

LAKE SUPERIOR STATE PARK



Town of Bethel, New York

Beach Area: 342 Dr. Duggan Road, Bethel, NY
Dam Area: 450 Dr. Duggan Road, Bethel, NY

Lake Superior State Park consists of 1,409 acres and features Lake Superior and Chestnut Ridge Pond. The park is part of the Palisades Interstate Park Commission and is operated by Sullivan County through a long-term license agreement. The County operates two areas of the park; Lake Superior's Beach Area (seasonal fee) and Lake Superior's Dam Area.



The Beach Area features a designated swimming area, sand beach, picnic areas with grills, group picnic pavilion (fee), kayak, rowboat, paddle

boat rentals, boat launch (electric motors only), vending machines, restrooms, shower/changing area, fishing (DEC fishing license required), volleyball court, playground (for children ages 5-12), and hiking trails.

The Dam Area features picnic areas with grills, a group picnic pavilion (fee), portable toilet facilities, and fishing (DEC fishing license required).

The beach area operates for swimming on weekends & holidays from Memorial Day weekend through June. Daily beach operation commences the last week of June through Labor Day. The park is open year round. Big game hunting (DEC hunting permit required), ice fishing (DEC fishing license required), hiking, and sleigh riding are permitted at the park.



WWW.SULLIVANNY.GOV

MINISINK BATTLEGROUND PARK



Town of Highland, New York

58 County Road 168, Barryville, NY

Minisink Battleground Park, which is listed on the National Register of Historic Places, is dedicated to the brave men who fought and died at the "Battle of Minisink", the Upper Delaware's only major Revolutionary War skirmish. Included in the park's 57 acres are picnic areas, a group picnic pavilion (fee), restroom facilities, and walking trails. Interpretive displays explain the various themes of the park: the battle, the flora and fauna, and mankind's use of the park down through the ages. Self-guiding trails run through the park providing the



visitor with an opportunity for a more in-depth knowledge of these themes. This facility is located within the Upper Delaware Scenic and Recreational River, a unit of

the National Park Service, and is in close proximity to the famous Roebling Bridge and Zane Grey Museum.

The Minisink Battleground is owned and maintained by Sullivan County through its Department of Parks, Recreation and Beautification. The Delaware Company, a nonprofit under contract with the County, is offering programming at the park.



WWW.SULLIVANNY.GOV

D&H CANAL LINEAR PARK

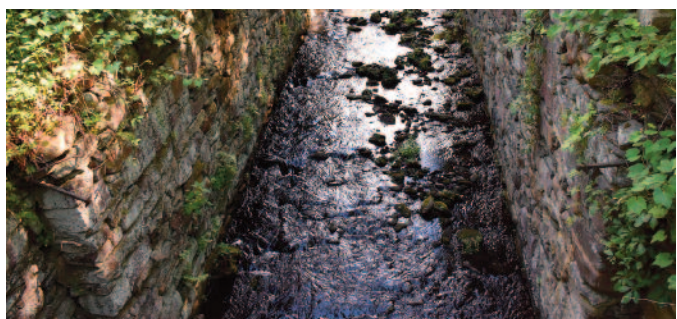


Town of Mamakating, New York

Located along Route 209

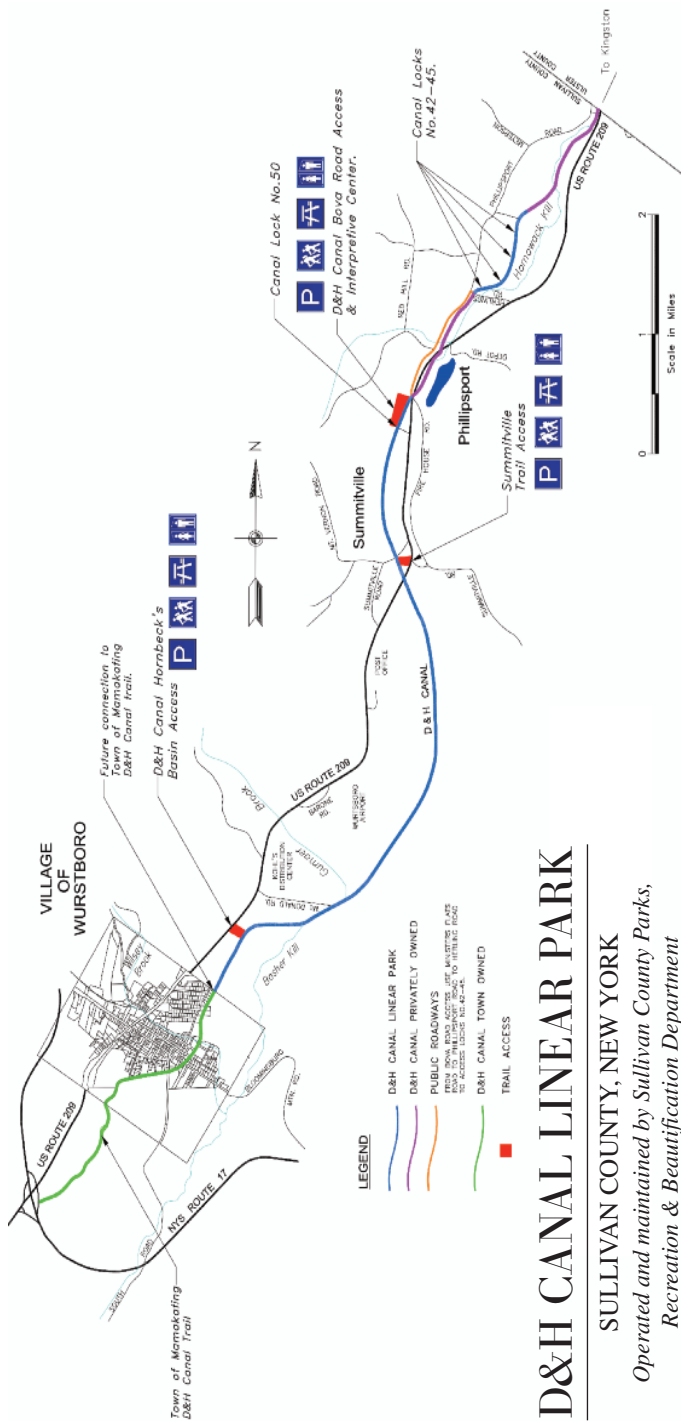
D&H Canal Linear Park consists of 45 acres and approximately 3½ miles of trail situated along the historic Delaware & Hudson Canal. Remains of the original locks, drydock, and waste weirs are visible from the towpath trail. Interpretive signs are located throughout the park to assist visitors in identifying the various canal structures. Three accesses are open at this time. Two are located off Route 209: Hornbeck's Basin access (3346 Rt. 209) is located ½ mile north of Wurtsboro and the Summitville access is adjacent to Ferguson Road. The D&H Canal Interpretive Center (16 Bova Road) also has an access site, located 4½ miles north of Wurtsboro between the Hamlets of Summitville and Phillipsport.

The trail is intended to accommodate a variety of users, including walkers, hikers, joggers, bicyclists, cross country skiers, snowshoeing, and nature enthusiasts. Motorized vehicles and horses are prohibited. Picnic tables, grills, and portable restroom facilities are available at accesses.



WWW.SULLIVANNY.GOV

D&H CANAL LINEAR PARK



D&H CANAL LINEAR PARK

SULLIVAN COUNTY, NEW YORK

*Operated and maintained by Sullivan County Parks,
Recreation & Beautification Department*

D&H CANAL INTERPRETIVE CENTER



Town of Mamakating, New York

16 Bova Road, Summitville, NY

The **D&H Canal Interpretive Center** displays the historic remains of the former Delaware & Hudson Canal including a lock and waste weir. The Center takes visitor's on a journey to explore life on the canal and through each phase of the canal's construction and its 70 years of operation. Learn about the lock system and enjoy the historic features of the site. Hike along the canal towpath from Summitville to Wurtsboro. Occasional special events are held.

Whether you are a fanatic canal enthusiast or simply wonder why there are remnants of fancy stone walls in strange places along

Route 209, the D&H Canal Intepretive Center will either solve some mysteries or fill in a few gaps about what people were up to in this area starting in the 1820s. The Center also houses a few original artifacts from the canal, photographs, paintings, documents, postcards, numerous maps, and other canal-related materials. A bookstore and restrooms are available in the Center.



WWW.SULLIVANNY.GOV

STONE ARCH BRIDGE HISTORICAL PARK



Town of Delaware, New York

25 Stone Arch Road, Kenoza Lake, NY

Stone Arch Bridge Historical Park features a scenic three-arched stone bridge as the centerpiece of this 20-acre park. The bridge was originally built in 1880 by Swiss immigrants Henry and Philip Hembt. It was restored in 1980-81 by the Division of Public Works and is listed on the National Register of Historic Places. Visitors can fish in the East Branch of the Callicoon Creek or take a walk along the Worthington Trail. A playground (for children ages 5-12), picnic area, and restroom facilities are available.



WWW.SULLIVANNY.GOV

SULLIVAN COUNTY CULTURAL CENTER



Town of Fallsburg, New York

265 Main Street, Hurleyville, NY

The **Sullivan County Cultural Center (Museum)** is located in the hamlet of Hurleyville. The building is home to the **Sullivan County Historical Society** (sullivancountyhistory.org) and the **Frederick A. Cook Society** (frederickcooksociety.org).

The museum is a three-story former school building that is owned and maintained by Sullivan County through its Department of Parks, Recreation & Beautification.

The Sullivan County Historical Society was founded in 1886 and has the primary mission of preserving & presenting the history of Sullivan County for future generations. This is accomplished by the acquisition of historical records, documents & artifacts illustrating the history of the county that are used in temporary & permanent exhibits, and the facilitation of archival & genealogical research.



The Frederick A. Cook Society maintains an exhibit and assists writers, scholars, and individuals seeking information on the life & work of Dr. Frederick A. Cook (1856-1940). Dr. Cook was a Sullivan County native and pioneer American Polar explorer. He spent two decades in expeditions to the Polar regions and subarctic Alaska between 1891 and 1909. Many authorities acknowledge him as the discoverer of the geographical North Pole in 1908.



WWW.SULLIVANNY.GOV

LIVINGSTON MANOR COVERED BRIDGE PARK



Town of Rockland, New York

130 Covered Bridge Road, Livingston Manor, NY

Livingston Manor Covered Bridge Park, originally known as Mott Flats Bridge and more recently called the



Vantran Bridge, was built by John Davidson in 1860. The bridge was restored to its original beauty in 1984 by the Division of

Public Works. Laminated arches were added to increase the capacity of the structure. The bridge is 103 feet long and spans the famous Willowemoc Creek, where visitors are welcome to fish. Picnic areas, group picnic pavilion (fee), and portable toilet facilities are available.



WWW.SULLIVANNY.GOV



Go to the trailkeeper.org website to find public walking trails and hikes that are offered throughout the region. Your one-source outlet for hiking trails and public lands in Sullivan County with easy-to-read, easy-to-access maps and facilities information and guides to hiking safety.



Find beautiful outdoor trails that you can hike, bike or even horseback ride. While you're out, check out the shops, lodgings, and attractions of Sullivan County. TrailKeeper.org connects you with it all.



TRAILKEEPER.ORG